

bioGenous™ Endometrial Cancer Organoid Kit (Serum-free)

Catalog: K2166-EC

Product Description

bioGenous™ Endometrial Cancer Organoid Kit is a serum-free culture medium for the establishment and maintenance of human endometrial cancer organoids. This kit supports the growth of patient-derived cancer organoids, which replicate the morphology, pathology, genetic, phenotypic, and behavioral traits of original tumours. This kit is a serum-free formulation that minimizes variability and ensures the reliable and reproducible culture of endometrial cancer organoids. bioGenous™ Endometrial Cancer Organoid Kit is a powerful tool for advancing medical research and precision medicine.

Product Information

Component	Component Cat#	Volume	Storage & Stability
bioGenous™ Endometrial Cancer Organoid Basal Medium	K2166-EC-A100/A500	100 mL/500 mL	2-8°C, 12 months
bioGenous™ Endometrial Cancer Organoid Supplement B (50x)	K2166-EC-B100/B500	2 mL/10 mL	-20°C, avoid repeated freeze-thaw cycles, 12 months
bioGenous™ Endometrial Cancer Organoid Supplement C (250x)	K2166-EC-C100/C500	0.4 mL/2 mL	-20°C, avoid repeated freeze-thaw cycles, 12 months

Materials & Reagents Required But Not Included

The following extended materials and reagents required for organoid maintenance can be purchased from www.biogenous.cn.

Manufacturer	Materials	Catalog#
bioGenous™	Primary Tissue Storage Solution (Serum-free)	K601005
bioGenous™	Cancer Organoid Basal Medium (Serum-free)	B213152
bioGenous™	Tumour Tissue Digestion Solution	K601003
bioGenous™	Red Blood Cell Lysis Solution	E238010
bioGenous™	Anti-Adherence Rinsing Solution	E238002
bioGenous™	Organoid Cryopreservation Medium (Serum-free)	E238023
bioGenous™	Organoid Dissociation Solution	E238001
bioGenous™	Organoid Culture ECM (Reduced Growth Factor)	M315066
	Fetal Bovine Serum (FBS)	-
	DPBS (1x), liquid, contains no calcium or magnesium	-
	100 µm Cell Strainer	-

Safety Precautions

Always follow standard laboratory safety procedures when handling biological materials. Wear appropriate personal protective equipment (PPE), including gloves, lab coat, and eye protection. Dispose of waste materials according to local regulations.

Preparation Before Use

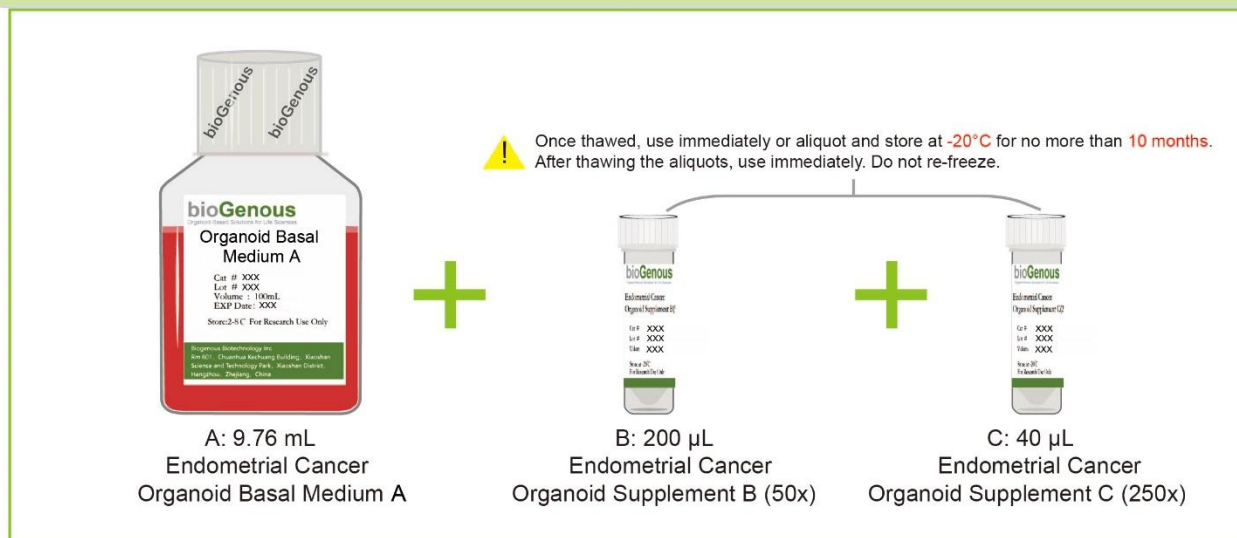
Before initiating the protocol, ensure that all components and equipment are properly prepared:

1. Verify that all components are stored according to the guidelines provided in the manual. Avoid repeated freeze-thaw cycles for sensitive reagents. Thaw all necessary reagents according to the instructions. Keep on ice or at the recommended temperature until ready to use.
2. Ensure that all equipment, such as incubators, pipettes, and centrifuges, are calibrated and functioning correctly.

Preparation of Endometrial Cancer Organoid Complete Medium

Use a sterile technique to prepare the complete medium. The following example is for preparing 10 mL complete medium. If preparing other volumes, adjust accordingly.

Endometrial Cancer Organoid Complete Medium



⚠ If not use immediately, store complete medium at $2-8^{\circ}\text{C}$ for no more than 2 weeks. bioGenous™ Endometrial Cancer Organoid Supplement B (50x) contains fungicide and antibiotics.

Endometrial Cancer Organoid Complete Medium:

1. Thaw Endometrial Cancer Organoid Supplement B (50x) and Endometrial Cancer Organoid Supplement C (250x) on ice. Mix thoroughly.
2. Add 200 μL Endometrial Cancer Organoid Supplement B (50x) and 40 μL Endometrial Cancer Organoid Supplement C (250x) to 9.76 mL Endometrial Cancer Organoid Basal Medium. Mix thoroughly.

Protocol for Establishment of Patient-Derived Endometrial Cancer Organoids

⚠ Studies involving primary human tissue material must follow all relevant institutional and government regulations. Informed consent must be obtained from all subjects before the collection of the primary human tissue material.

Establishment of Organoids from Primary Tissue

1. Collect primary endometrial cancer biopsies in ice-cold Primary Tissue Storage Solution (K601005) using conical tubes. Keep tissue samples at 4°C until the start of the isolation.
2. Assess whether the obtained biopsies consist purely of tumour tissues. If fat or muscle tissues are present, remove these non-tumour components as much as possible using surgical scissors or scalpels and forceps under a dissection microscope. Otherwise, continue to the Step 3.
3. Rinse the tissue with Cancer Organoid Basal Medium (B213152) or DPBS twice.
4. Mince the tissue into small fragments of 1-3 mm^3 in a cell culture dish using surgical scissors or scalpels.
5. Digest the tissue fragments with 10 mL of Tumour Tissue Digestion Solution (K601003) in a 15 mL conical tube at 37°C , with variable incubation times ranging from 30 min to 1 h. Carefully monitor the digestion process, mixing the content of the tube every 5-10 min by shaking vigorously or pipetting the mixture up and down. The digestion process is complete when most of tissue fragments could pass through the 1 mL pipette tips.
6. Terminate tissue digestion by adding FBS to the tissue digestion mixture to a final concentration of 2% and filter using a 100 μm cell strainer.
7. Collect and centrifuge the filtered cells at 250 x g for 3 min at 4°C . In case of a visible red pellet, aspirate the supernatant and resuspend the pellet using 2 mL of Red Blood Cell Lysis Solution (E238010) to lyse the erythrocytes at room temperature for 1 min and centrifuge at 250 x g for 3 min at 4°C .
8. Aspirate the supernatant and resuspend the pellet in Cancer Organoid Basal Medium, centrifuge at 250 x g for 3 min at 4°C . Repeat this step once more time.

9. Aspirate the supernatant and resuspend the pellet in bioGenous™ Organoid Culture ECM (M315066). The ECM should be kept on ice to prevent solidification. The amount of ECM used depends on the size of the pellet. Approximately 10,000 cells should be plated in 25 µL of ECM.
CRITICAL: Do not overly dilute the ECM (>70% (ECM vol/total vol)), as this may inhibit the proper formation of the solid droplets.
10. Seed the ECM containing cells at the bottom of 24-well cell culture plates in droplets of ~30 µL each around the center of the well.
CRITICAL: Once the organoids are resuspended in ECM, proceed as quickly as possible, as the ECM may solidify in the tube or pipette tip. Do not let the ECM touch the walls of well.
11. Prepare the required amount of endometrial cancer organoid complete medium.
12. Once the ECM droplets have solidified (15-25 min) and carefully add 500 µL organoid complete medium to each well.
CRITICAL: Do not add the medium directly on top of the ECM droplets, as this might disrupt the droplets.
13. Place the culture plate in a humidified incubator at 37°C and 5% (vol/vol) CO₂.
14. Change the medium every 3-4 days by carefully aspirating the medium from the wells and replacing it with a fresh, pre-warmed organoid complete medium.
15. Closely monitor the organoid formation. Ideally, patient-derived endometrial cancer organoids should be passaged for the first time between 7 and 10 days after the initial seeding. Typical morphologies of successfully cultured patient-derived human endometrial cancer organoids are shown in Figure 1.

Splitting and Passaging of Organoids

1. Pipette up and down to disrupt the ECM and transfer the organoid suspension to a 1.5 mL tube. Continue pipetting up and down to create pressure to help remove the ECM.
2. Centrifuge the tube at 250 x g for 3 min at room temperature.
3. Aspirate the supernatant and split the organoids using either Organoid Dissociation Solution (E238001) or by mechanical disruption.
Organoid dissociation solution-based cell dissociation: Resuspend the pellet in 0.2 mL of Organoid Dissociation Solution, pipette up and down and incubate at 37°C until the organoids are released from the ECM. Pipette up and down with a filter tip for ≥8 times every 2 min to aid in the disruption of the organoids. Closely monitor the digestion to keep the incubation time in the Organoid Dissociation Solution to a minimum.
Mechanical disruption-based cell dissociation: Resuspend the pellet in 1.5 mL of Cancer Organoid Basal Medium. Carefully pipette the organoid suspension up and down 30 times by pipetting against the bottom of the tube to create pressure, which will aid organoid disruption.
CRITICAL: Do not dissociate in Organoid Dissociation Solution for >7 min, as this may result in poor organoid outgrowth or even loss of the culture. As a rule of thumb, digestion is complete if a mixture of small lumps of cells (consisting of 10-50 cells) can be observed.
4. After shearing is complete, wash once by adding 1 mL Cancer Organoid Basal Medium and centrifuge at 250 x g for 3 min at room temperature.
5. Aspirate the supernatant and resuspend the organoid pellet in 70% (vol/vol) ECM, and plate organoids in droplets at the bottom of a culture plate. After seeding, transfer the culture plates to a humidified incubator at 37°C and 5% (vol/vol) CO₂ for 15-25 min.
6. Pre-warm the endometrial cancer organoid complete medium at 37°C.
7. After the ECM droplets have solidified (15-25 min), carefully pipette the pre-warmed medium into the wells.
8. Place the culture plates in a humidified incubator at 37°C and 5% (vol/vol) CO₂ until the organoids are needed for further experiments.

Applications

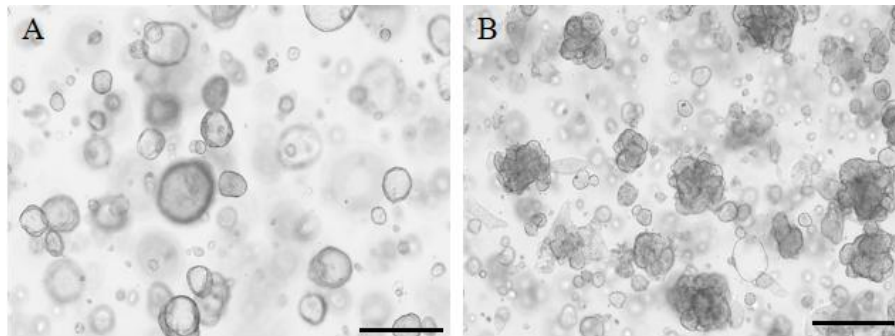


Figure 1. Morphological examples of successfully cultured endometrial cancer organoids derived from different patients at day 5 (A) and day 7 (B), respectively. Scale bar: 200 μ m.

Quality Control

All components are negative for bacterial and fungal contamination. Certificate of authenticity (COAs) for all other products are available upon request.

Safety information

Read the Safety Data Sheets (SDSs) and follow the manufacture's instruction.

Disclaimer

To the fullest extent permitted by applicable law, bioGenous BIOTECH, Inc. and/or its affiliates shall not be liable for any special, incidental, indirect, punitive, multiple, or consequential damages arising from or related to this document or your use thereof.

Contact and Support

For questions, suggestions, and technical supports, please contact us at E-mail: info@biogenous.cn.

Last updated on 30th August, 2024